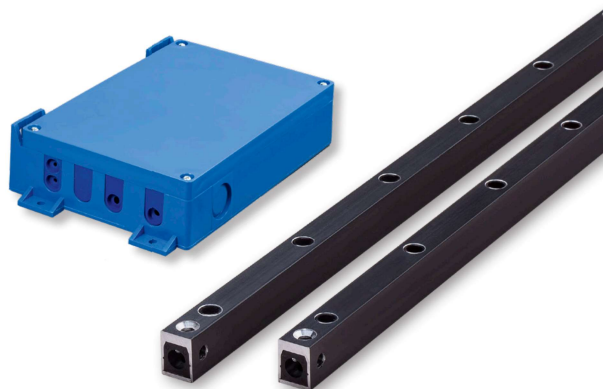


cegard/Mini-MOD

Technical data

FEATURES

- ▶ Power supply voltage of 20 ... 265 VAC or 20 ... 375 VDC
- ▶ Relay output for easy integration into existing systems
- ▶ Wide range of 0 ... 5 m
- ▶ cegard/Mini-MOD with 36 elements fulfills EN 81-20
- ▶ Ideal for retrofitting using different optimized door mounting kits
- ▶ Status LED integrated into edge
- ▶ IP65 (Standard) and IP67 (waterproof) versions available
- ▶ Edge can be front or side mounted – mounting holes are compatible with the MiniMax and cegard/Max light curtains



OPTICAL

Operating range	0 ... 5 m	
No. of optical elements	16 / 24 / 32 / 36	
No. of beams	16 elements	74 beams
	24 elements	114 beams
	32 elements	154 beams
	36 elements	174 beams remain active to complete door closure
Max. ambient light	100,000 Lux	

MECHANICAL

Dimensions (w × h × l)	12 × 16 × max. 2,000 mm
Housing material	Natural or black anodized aluminum
Enclosure rating	
- Opto edges	IP65 / (IP67)
- Control unit	IP54
Temperature range	-20°C ... +60°C

ELECTRICAL

Supply voltage U _{sp}	20 ... 265 VAC / 20 ... 375 VDC
Max. current consumption	80 mA at 24 VDC
	45 mA at 240 VAC
Relay output	Max. 250 VAC / 5 A
	Max. 125 VDC / 0.5 A
	Max. 30 VDC / 5 A
	Min. 5 VDC / 10 mA
Typ. response time with	16 elements 80 ms
	20 elements 105 ms
	32 elements 130 ms
	36 elements 130 ms

GENERAL

EMC emission	EN 12015:2014
EMC immunity	EN 12016:2013
Vibration	IEC 60068-2-6:2007
Shock	IEC 60068-2-27:2008
Cable durability	IEC 60227-2:2003
RoHS	2011/65/EU
Certificates	CE, CSA

CONNECTION CABLE

Emitter

Cable length	5 m
Diameter	Ø 3.5 mm
Material	PVC, black
Connection	M8, 4-pin
Plug color	White

Receiver

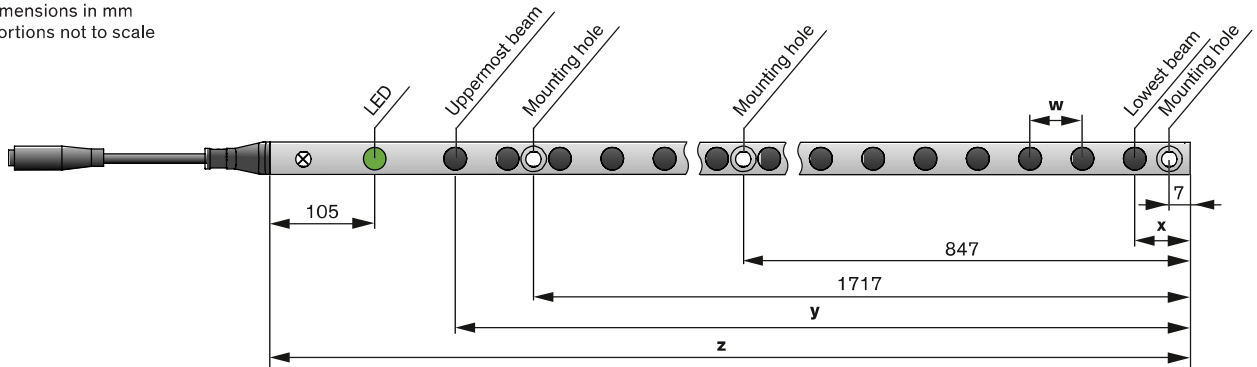
Cable length	5 m
Diameter	Ø 3.5 mm
Material	PVC, black
Connection	M8, 4-pin
Plug color	Blue



CEDES AG is certified according to ISO 9001: 2015.

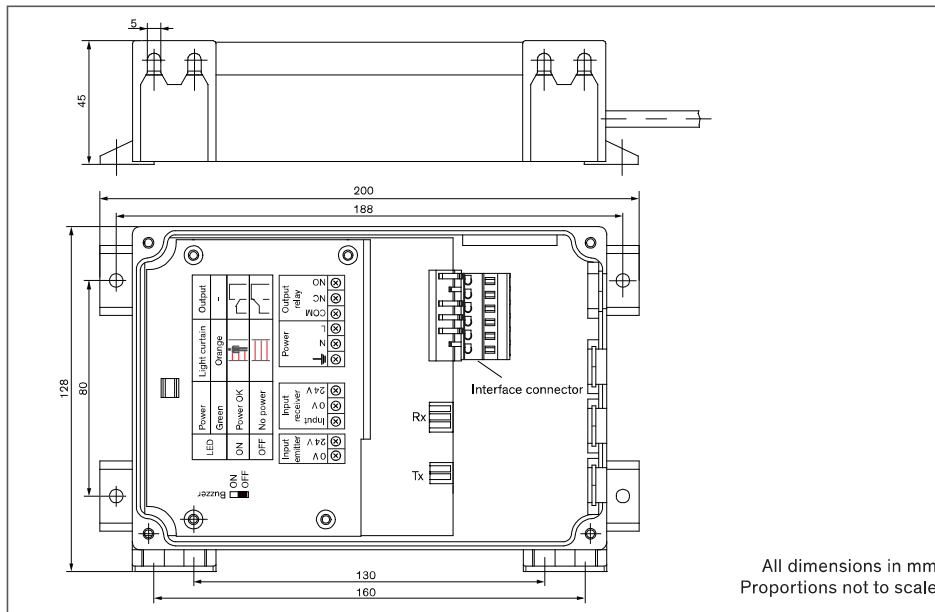
Dimensions edges

All dimensions in mm
Proportions not to scale



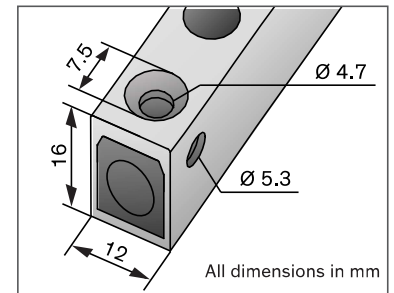
	16 elements	24 elements	32 elements	36 elements	36 elements
w	120	70	57.4	45.1	45.1
x	22	20	20	20	20
y	1822	1630	1800	1600	1600
z	2000	1900	2000	1900	2000

Dimensions control unit



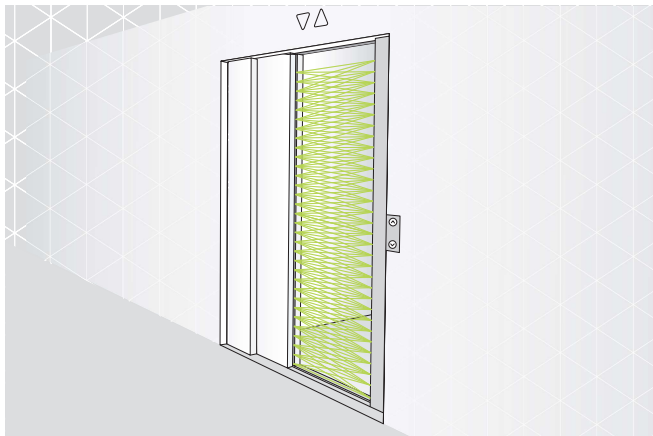
All dimensions in mm
Proportions not to scale

Detailed view



All dimensions in mm

Applications



Dynamic mounting



Static mounting